

ANALYZER SOLUTIONS FOR YOUR PROCESS!

Model 900 Air Demand Analyzer Application Data Sheet

A. General

- Company: _____
Location: _____
- Process Type: Claus, stages ____, Recovery Efficiency ____ % MCRC, CBA, Sulfreen
 SCOT BSRP Stihl Otto
 SuperClaus O₂ Enrichment
- Contact: _____ Ph: (____) _____
Position: _____ Fax: (____) _____

B. Tail Gas Data (Conventional operation)

- On-ratio Composition (mole %)

	Normal	Maximum		Normal	Maximum
H ₂ S	_____	_____	CH ₄	_____	_____
SO ₂	_____	_____	Others	_____	_____
COS	_____	_____	_____	_____	_____
CS ₂	_____	_____	_____	_____	_____
CO ₂	_____	_____	_____	_____	_____
N ₂	_____	_____	_____	_____	_____

H₂S/SO₂ process design ratio: _____ Air to acid gas design ratio: _____
Tail gas flow rate: _____ kmol/h lbmol/h

- Unusual Components or Contaminants _____
- Pressure: _____ kPa (gauge) psig Temperature: _____ °C °F
- Tail Gas Duct Diameter at Sample point: _____ cm in Duct orientation: vertical horizontal

C. Acid Gas Data

- Composition (mole %)

H ₂ S	_____	CO ₂	_____	Others	_____	_____
NH ₃	_____	N ₂	_____	_____	_____	_____
CH ₄	_____			_____	_____	_____

Acid gas flow rate: _____ kmol/h lbmol/h

2. Unusual Components or Contaminants _____

3. Pressure: _____ kPa (gauge) psig

Temperature: _____ °C °F

D. Analyzer Location

1. Ambient Conditions:

i) Temperature min: _____ °C °F max: _____ °C °F

ii) Average Barometric Pressure _____ mm Hg kPa in Hg

OR

Plant Elevation above Sea Level _____ m ft

iii) Special Conditions (e.g. Sandstorms, Hurricanes, etc.) _____

2. Area Classification at Analyzer Shelter (NOTE: Analyzer is GP only):

General Purpose

Hazardous: Class _____, Division/Zone _____, Group _____

E. Utilities

1. Power to the Analyzer: 120V,60Hz 240V,60Hz 120/208V,60Hz 220/308V,50Hz
 220V,50Hz 240V,50Hz Other (specify) _____

Is UPS required (500 W)? Yes No

If Yes, UPS supplied by: AMETEK Customer

2. Instrument Air Requirements: 210 - 830 kPa (gauge) @ 30 L/min (30 - 120 psig @ 1 CFM)

3. Shelter Purge Air (if necessary): 415 - 830 kPa (gauge) @ 340 L/min (60 - 120 psig @ 12 CFM)

NOTE: PURGE AIR MUST BE BREATHABLE QUALITY

4. Sample & Vent Valves Steam: 415 - 1035 kPa (gauge) (60 - 150 psig) saturated

F. Sample/Vent Lines

- Sample & vent line lengths are measured from the sample probe connection and from the vent valve connection to the sample and vent ports on shelter wall, respectively.
- For AMETEK shelters, sample & vent lines extend 28 cm (11 inches) into the shelter to connect to the analyzer. For AMETEK free-standing enclosure, lines extend 21 cm (8 inches) into the enclosure.
- Line lengths are **NOT** field alterable.
- The maximum vertical rise shall not exceed 4 m (13 ft). Contact AMETEK for more details.
- Refer to Item H when calculating the sample/vent line lengths.

Shelter: i) Sample Line Length: _____ cm inches + 28 cm (11 in) = _____ cm in

Shelter: ii) Vent Line Length: _____ cm inches + 28 cm (11 in) = _____ cm in

FS Encl: i) Sample Line Length: _____ cm inches + 21 cm (8 in) = _____ cm in

FS Encl: ii) Vent Line Length: _____ cm inches + 21 cm (8 in) = _____ cm in

Note: Please consult AMETEK if there are any questions regarding sample/vent line specifications as we would be pleased to assist you.

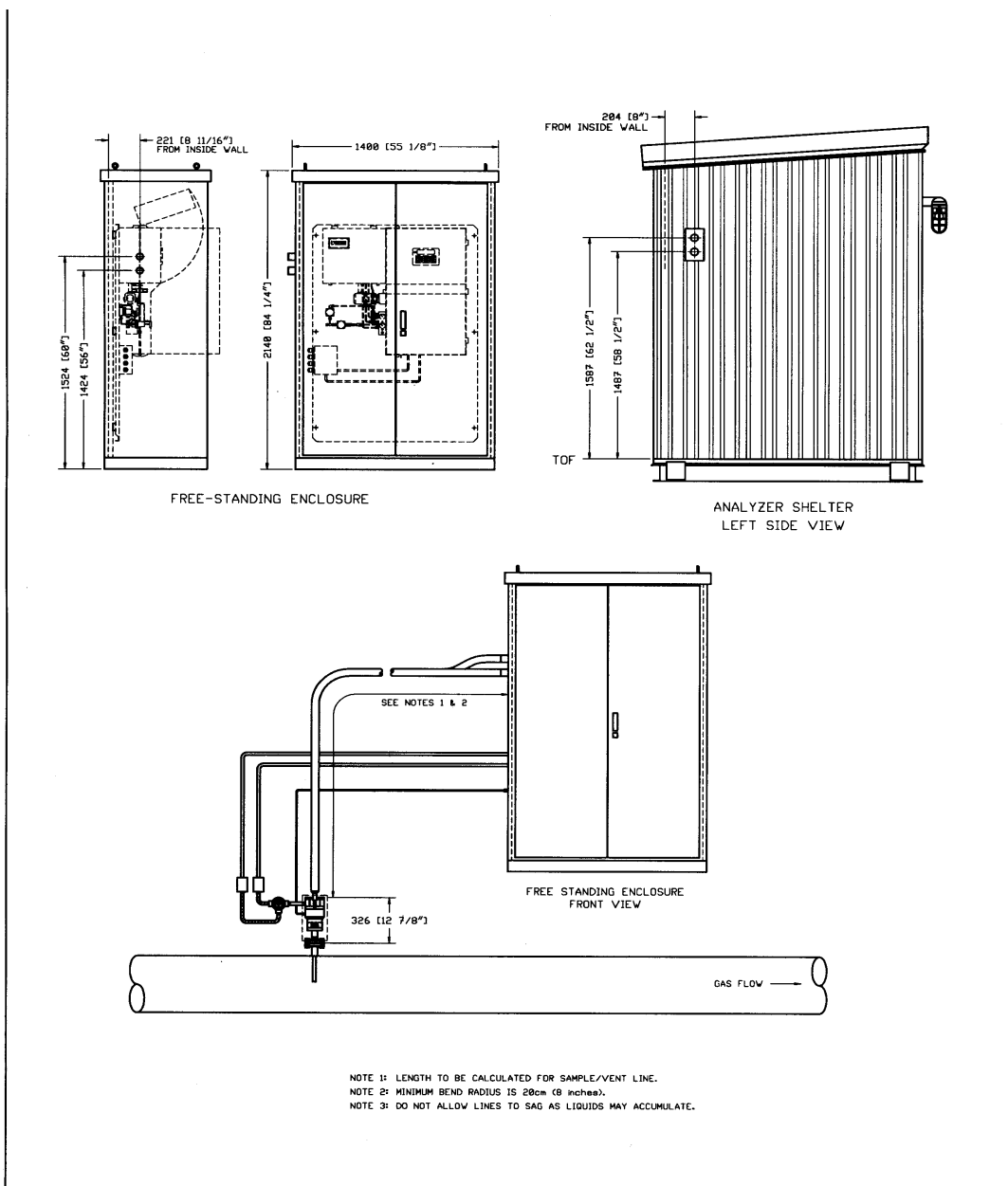
G. Tag Numbers

Are tag numbers required? Yes No
 If Yes, Analyzer Tag: _____

See drawing for details

H. Sample/Vent Line Calculation Information

Configuration shown with AMETEK's standard equipment (i.e. shelter, probe, valves, etc.)



- Note 1. Length to be calculated for sample/vent line.
- 2. Minimum bend radius is 20 cm (8 inches).
- 3. Do not allow lines to sag as liquids may accumulate.

Completed by: _____ **Date:** _____

Phone: (_____) _____